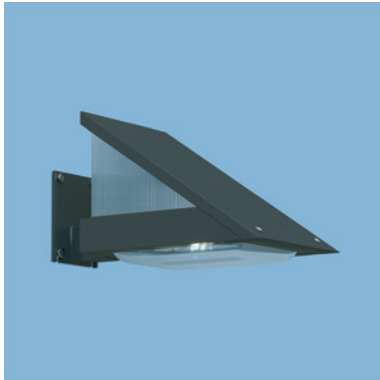


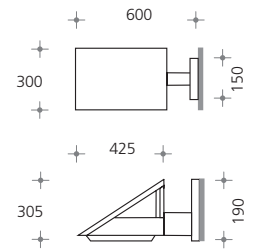
- ACCESS AND MINOR ROADS
- CITY SQUARES
- SHOPPING MALLS
- INDUSTRIAL AREAS
- CORPORATE HEADQUARTERS



Vector 400 Wall fitting.

Housing of formed stainless steel, painted, stainless steel screws, hinged roof with safety latch, clear PC diffuser - can be removed for maintenance without tools, visible luminaire body features intentionally minimised modelling-light, asymmetric high performance mirror optics -VARIO-OPTIC for all layouts, for planning assistance please contact selux B: 300mm, L: 425mm, H: 305mm, protection category IP65, protection class I with option class II, wall bracket with wall plate of galvanised steel, painted, standard colour: silver anthracite [-7].

A_w: 0,065 m², weight: 10 kg
Wall fitting SX 249 ■ ■ - ■
 including wall bracket



VARIO-OPTIC

Mirror optics asymmetric

HST	HIT-CE*	
50W → 1 4	35W → 1 3	
LVK → 7800	LVK → 7799	

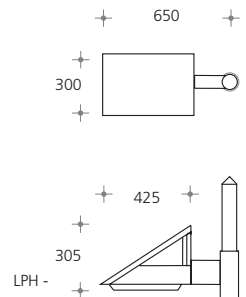


Vector 400 Pole top fitting with bracket for pole top Ø: 76mm, for mounting on recommended poles.

Housing of formed stainless steel, painted, stainless steel screws, hinged roof with safety latch, clear PC diffuser - can be removed for maintenance without tools, visible luminaire body features intentionally minimised modelling-light, asymmetric high performance mirror optics - VARIO-OPTIC for all layouts, for planning assistance please contact selux, B: 300mm, L: 425mm, H: 305mm, protection category IP65, protection class I with option class II, pole top mounted bracket, for pole top Ø: 76mm

and pole extension of galvanised steel, painted, standard colour: silver anthracite [-7].

A_w: 0,065 m², weight: 10 kg
Pole top fitting SX 249 ■ ■ - ■
 including pole top bracket and pole extension



VARIO-OPTIC

Mirror optics asymmetric

HST	HIT-CE*	
50W → 2 0	35W → 2 4	
LVK → 7800	LVK → 7799	

*G12 base

Please complete reference no. with the relevant codes for optic, lamp and colour.

Specification example: SX 249 1 4 - 7	VECTOR 400 Wall luminaire SX 249	HST 50W 1 4	silver anthracite - 7
---	---	-----------------------	---------------------------------

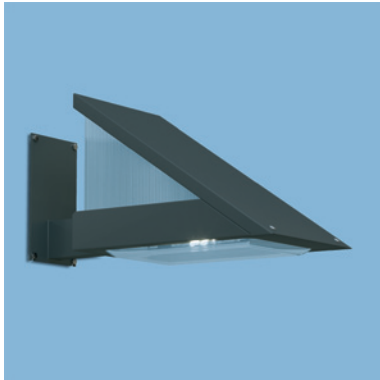
Colour code: → ■ silver anthracite - 7, choice of colours - 9

Recommended Poles

Conical galvanised steel pole, painted, features extended buried base and anti-sink plate set, CE-approval according to EU construction-product regulations, supplied with IP 54 fuse box 2x5x16mm² for loop in-and-out.

H: 3500 / 800mm	pole top Ø: 76mm	LPH: 3500mm	SX 091 16- ■
H: 4000 / 800mm	pole top Ø: 76mm	LPH: 4000mm	SX 092 16- ■
H: 4500 / 800mm	pole top Ø: 76mm	LPH: 4500mm	SX 037 16- ■

- ACCESS AND MINOR ROADS
- CITY SQUARES
- SHOPPING MALLS
- INDUSTRIAL AREAS
- CORPORATE HEADQUARTERS

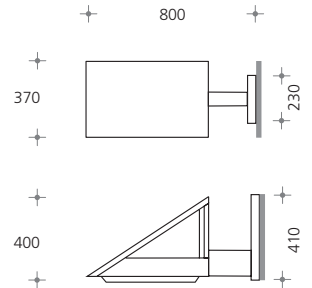


Vector 525 Wall fitting.

Housing of formed stainless steel, painted, stainless steel screws, hinged roof with safety latch, clear PC diffuser - can be removed for maintenance without tools, visible luminaire body features intentionally minimised modelling-light, asymmetric high performance mirror optics - VARIO- OPTIC for all layouts, for planning assistance please contact selux, B: 370mm, L: 540mm, H: 400mm, protection category IP65, protection class I with option class II, wall bracket with wall plate of galvanised steel, painted, standard

colour: silver anthracite [-7].

A_w: 0,125 m², weight: 13 kg
Wall fitting **SX 251** ■ ■ ■
 including wall bracket



VARIO-OPTIC

Mirror optics
 asymmetric

HST	HIT-CE
50W → 2 0 LVK → 7813	35W* → 2 1 LVK → 7808
70W → 2 2 LVK → 7813	70W → 2 3 LVK → 7808

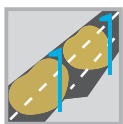
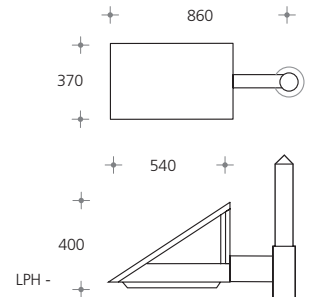


Vector 525 Pole top fitting with bracket for pole top Ø: 76mm, for mounting on recommended poles.

Housing of formed stainless steel, painted, stainless steel screws, hinged roof with safety latch, clear PC diffuser - can be removed for maintenance without tools, visible luminaire body features intentionally minimised modelling-light, asymmetric high performance mirror optics - VARIO-OPTIC for all layouts, for planning assistance please contact selux, B: 370mm, L: 540mm, H: 400mm, protection category IP65, protection class I

with option class II, pole top mounted bracket, for pole top Ø: 76mm, and pole extension of galvanised steel, painted, standard colour: silver anthracite [-7].

A_w: 0,125 m², weight: 13 kg
Pole top fitting **SX 250** ■ ■ ■
 including pole top bracket and pole extension



VARIO-OPTIC

Mirror optics
 asymmetric

HST	HIT-CE
50W → 2 0 LVK → 7813	35W* → 2 1 LVK → 7808
70W → 2 2 LVK → 7813	70W → 2 3 LVK → 7808
100W → 2 4 LVK → 7813	100W → 2 5 LVK → 7808
150W → 2 6 LVK → 7813	150W → 2 7 LVK → 7808

*35W: G12 base • on request with Philips CosmoPolis (HIT-COS).
 Please complete reference no. with the relevant codes for optic, lamp and colour.

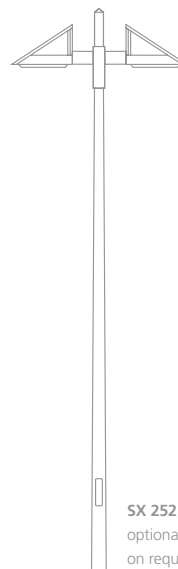
Specification example: SX 251 2 0 - 7	VECTOR 525 Wall fitting SX 251	HST 50W 2 0	silver anthracite - 7
---	---	-----------------------	---------------------------------

Colour code: → ■ silver anthracite - 7, choice of colours - 9

Recommended Poles

Conical galvanised steel pole, painted, features extended buried base and anti-sink plate set, CE-approval according to EU construction-product regulations, supplied with IP 54 fuse box 2x5x16mm² for loop in-and-out.

H: 4000 / 800mm	pole top Ø: 76mm	LPH: 4000mm	SX 092 16- ■
H: 4500 / 800mm	pole top Ø: 76mm	LPH: 4500mm	SX 037 16- ■
H: 5000 / 1000mm	pole top Ø: 76mm	LPH: 5000mm	SX 094 16- ■
H: 6000 / 1000mm	pole top Ø: 76mm	LPH: 6000mm	SX 018 16- ■



SX 252
 optional double fixture
 on request

- MAIN ROADS
- CITY SQUARES
- SHOPPING MALLS
- INDUSTRIAL AREAS
- CORPORATE HEADQUARTERS



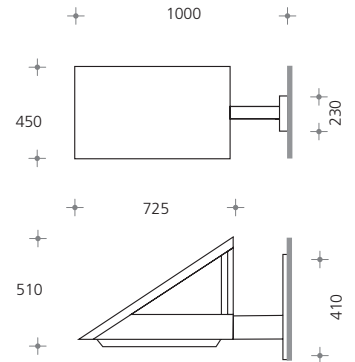
Vector 700 Wall fitting.

Housing of formed stainless steel, painted, stainless steel screws, hinged roof with safety latch, clear PC diffuser - can be removed for maintenance without tools, visible luminaire body features intentionally minimised modelling-light, asymmetric high performance mirror optics - VARIO-OPTIC for all layouts, for planning assistance please contact selux, B: 450mm, L: 725mm, H: 510mm, protection category IP65, protection class I with option class II, bracket with wall plate of galvanised steel, painted,

standard colour: silver anthracite [-7].

Aw: 0,206 m², weight: 18 kg

Wall fitting **SX 261** ■ ■ ■



VARIO-OPTIC

Mirror optics asymmetric

HST

70W → **1 2**
LVK → 7812

100W → **1 0**
LVK → 7812

HIT-CE

70W → **1 3**
LVK → 7811

100W → **1 5**
LVK → 7811



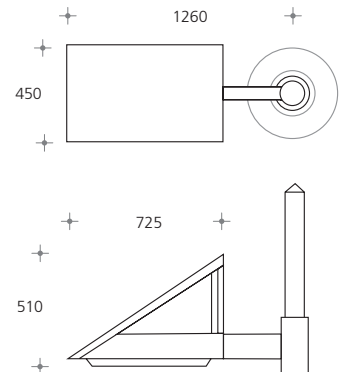
Vector 700 Pole top fitting with bracket for pole top Ø: 90mm, for mounting on recommended poles.

Housing of formed stainless steel, painted, stainless steel screws, hinged roof with safety latch, clear PC diffuser - can be removed for maintenance without tools, visible luminaire body features intentionally minimised modelling-light, asymmetric high performance mirror optics - VARIO-OPTIC for all layouts, for planning assistance please contact selux, B: 450mm, L: 725mm, H: 510mm, protection category IP65, protection class I with option class II, pole top mounted

bracket, for pole top Ø: 90mm, and pole extension of galvanised steel, painted, standard colour: silver anthracite [-7].

Aw: 0,206 m² / weight: 18 kg

Pole top fitting **SX 254** ■ ■ ■



Bracket 250mm



VARIO-OPTIC

Mirror optics asymmetric

HST

100W → **2 4**
LVK → 7812

150W → **2 6**
LVK → 7812

250W → **2 8**
LVK → 7814

HIT-CE

100W → **2 5**
LVK → 7811

150W → **2 7**
LVK → 7811

250W → **2 9**
LVK → 7811

On request with Philips CosmoPolis (HIT-COS).

Please complete reference no. with the relevant codes for optic, lamp and colour.

Specification example:
SX 261 2 2 - 7

VECTOR 700
Wall fitting
261

HST 70W
2 2

silver anthracite
- 7

Colour code: → ■ silver anthracite - **7**, choice of colours - **9**

Recommended Poles

Conical galvanised steel pole, painted, features extended buried base and anti-sink plate set, CE-approval according to EU construction-product regulations, supplied with IP 54 fuse box 2x5x16mm² for loop in-and-out.

H: 6000 / 1000mm	pole top Ø: 90mm	LPH: 6000mm	*SX 115 14- ■
H: 7000 / 1200mm	pole top Ø: 90mm	LPH: 7000mm	SX 116 14- ■
H: 8000 / 1200mm	pole top Ø: 90mm	LPH: 8000mm	SX 117 14- ■
H: 10000 / 1500mm	pole top Ø: 90mm	LPH: 10000mm	SX 126 14- ■

*Two-part die-cast aluminium base cover on request.